

Post-offer Visit Day Guide




Be Inspired. Be you.

9.30am - 4.30pm

Wednesday 19 February 2025

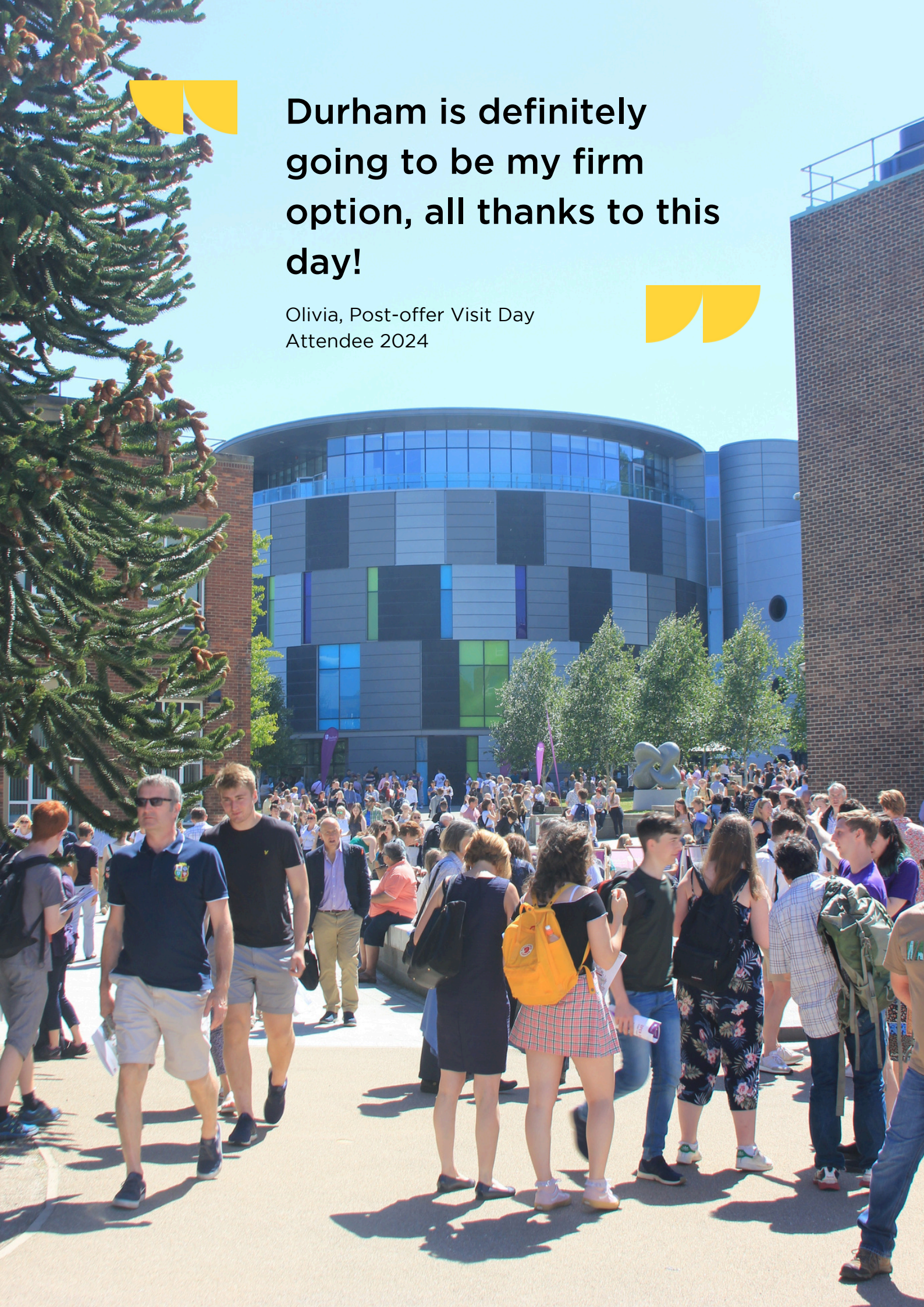

Monday 24 March 2025

Saturday 26 April 2025



**Durham is definitely
going to be my firm
option, all thanks to this
day!**

Olivia, Post-offer Visit Day
Attendee 2024



Post-offer Visit Days

Wednesday 19 February 2025

Monday 24 March 2025

Saturday 26 April 2025

9.30am - 4.30pm

Contents

Welcome and Congratulations	4-5
Help With Travel and Accommodation (Event Bursary Information)	6
Information for Offer-holders	7
Information for Parents, Guardians and Others	8
Planning Your Visit	9
Department Session & College Locations	10 - 11
Information Hub	12
Durham City Map	13
Shuttle Bus Schedule	14
Walking Times Guidance	15
Explore the Area - Tours	16
Find out more...Libraries & Facilities	17
Find out more...Experience Durham	18 - 20
Find out more...Durham Students' Union	21
Find out more...Professional Support Services	22
Find out more...Placement Years & Study Abroad	23
Refreshments	24
Travelling to the University & Parking	25 - 26



Connect with us



@thedurhamstudent



@durham_uni
#DUInspire



facebook.com/
durhamuniversity



youtube.com/
durhamuniversity



durham-student.org



@thedurhamstudent
@duzthedurhamdog



“There was a very positive and welcoming atmosphere.”

Molly,
Post-offer Visit
Day Attendee
2024

Welcome!

“Congratulations on your offer of a place to study with us here at Durham University. Now you have to make a decision about which offer to accept as your firm choice. This decision is not just about the next three years; it will shape your journey in life. I very much hope it will be the offer from Durham University that you choose to accept. By experiencing a little bit of life as a Durham University student and getting to know the University by participating in a range of interactive programmes, Post-offer Visit Days provide unique insights into Durham’s distinctive educational opportunities and vibrant student experiences. You can be sure that your college will extend a warm welcome and offer insight into the social and support sides of student life. You’ll learn about Durham’s unrivalled opportunities for pursuing extra-curricular interests. Each option includes dedicated time with your academic department, with a programme of engaging activities designed to deepen your course understanding. Please join us at a Post-offer Visit Day. Be curious, ask questions, participate in programmes, explore buildings, examine course structures, have fun. Above all else, experience the Durham Difference. On behalf of the entire Durham University community, I wish you a very successful and enjoyable visit to Durham University.”



“Congratulations! You’ve received an offer from Durham University. This is no small achievement against what will have undoubtedly been strong competition.”

Tony Fawcett,
Pro-Vice Chancellor
(Education)





"May I offer my congratulations on receiving an offer from Durham University – an impressive accomplishment! The next milestone in your journey is the Post-offer Visit Day. We hope this will make your decision about your firm choice far more certain; we understand that it is an important decision that will shape the rest of your life. In addition to helping you get to know your department, these visit days aim to give you an insight into the outstanding student experience that Durham University offers beyond your academic programme. We believe this wider student experience, centred on the Durham collegiate system, is unique and will give you the confidence and skills to flourish in your future life.

The 16 Colleges are welcoming, stimulating and enabling communities that provide the perfect framework for personal enrichment and support, at a scale that is far more human and relatable than you will find at nearly any other institution.

They will help develop your intellectual curiosity through a programme of multidisciplinary discussions and events, often learning from some of the world's leading experts as well as your peers; you will have many opportunities to share ideas with and learn from academics and fellow students in all the University's Departments. The Colleges, supported by the Student Enrichment Directorate and the Students' Union, also provide opportunities for participation across a huge range of sports, music, drama, and other activities. Standards range from international elite level all the way to just having fun; come and get involved – no one is excluded!

In addition, Durham University gives you the opportunity to think about your place as a global citizen and how you can learn from others, as well as what a difference you can make to those around you. For example, we lead the way nationally for student volunteering; and our Colleges' student communities are themselves driven by teams of students who take on the responsibility of leading and enabling their peers.

During your visit, you will meet many current students. I encourage you to ask them questions and to hear their stories – they are themselves the greatest examples of the transformative experience Durham University provides. After experiencing a real taste of life as a Durham student, I hope you choose to accept your offer from us. On behalf of the staff and students here at Durham University, I wish you a very enjoyable and informative visit. We love it here – we hope you will too."

**Jeremy Cook, Pro-Vice Chancellor
(Colleges and Student Experience)**



Help With Travel and Accommodation

Event Bursary

You may be able to claim an Event Bursary of up to a maximum of £200 per undergraduate offer holder for travel and accommodation costs associated with attendance at one of our Post-offer Visit Days. We will include the information and link to the application form in your booking confirmation so keep a look out!

Claiming couldn't be easier. Firstly you need to fill in the Event Bursary Application form. We will assess your evidence before you arrive and let you know if you have been successful.

All you then need to do is visit our Event Bursary Claim Desk, on your visit day, located in the Teaching and Learning Centre (Map Ref 50:D6), between 9:30am and 4pm, and speak with a staff member.

You must register at the Event Bursary Claim Desk on the day to confirm your attendance at the event.

In order to claim you will need to provide the following when you apply:

- Evidence that shows you are in receipt of government-funded and income-assessed financial support from your college or sixth form such as a 16-19 bursary or free school meals.

AND

- Evidence that shows you are a student at a state-maintained school/college*.

or

- Evidence which shows you are care experienced and/or estranged (CEES).**

or

- Evidence that shows you are studying at an independent school and in receipt of a full scholarship awarded on the grounds of financial hardship.

or

- Have successfully completed one of the following Access and Participation schemes with Durham University:
 - STEP
 - Sutton Trust Summer School
 - Supported Progression
- - Futures in STEM

* includes Academy and Grammar school sixth forms.

** 'CEES' refers to anyone who is care experienced and/or estranged. 'Care experienced' means anyone who has been, or is currently, in care. This care may have been provided in many different settings, including living with foster carers; living in a residential children's home; being looked after at home under a supervision order; living with friends or relatives in kinship care. 'Estranged' students are those aged 18-24 who are not communicating with either of their biological or adoptive parents due to an irreconcilable breakdown in their relationships with them.

Please note receipt of child benefit for the offer holder is not sufficient evidence. Unfortunately we are unable to make payments retrospectively.



Offer Holders - Planning Your Day

Helping you make a great decision

What's in it for me?

- Experience life as a Durham University student.
- Speak to current Durham Students.
- Get answers to questions.
- Experience what it will be like to study at Durham.

College Activity - 9.30am - 12.30pm

Drop into any of our 16 Undergraduate Colleges between 9.30am - 12.30pm. More than somewhere to eat and sleep, your college will provide experiences, challenges and opportunities. Your college will make your time at Durham much more than just a degree. Meet staff and find out more about our unique collegiate system. We recommend choosing 3 colleges to visit during this time.

Your Life (Wider Student Experience) - 9.30am - 1pm

Being at university isn't just about studying; it's also about living. Get a glimpse into the extra-curricular and social side of being a Durham University student. Whatever your passion, whether you participate for fun or to gain and develop additional skills, Durham University can deliver. Visit the Sports and Wellbeing Park to speak to representatives from Team Durham Sport and Volunteering between 9.30 am - 1.00 pm. If you're interested in Music or Theatre, visit the Sir Thomas Allen Assembly Rooms Theatre between 9.30 am - 1.00 pm.

Your Degree (Academic Tasters) - 1.30pm until 4.30pm

Get a flavour for how your degree is structured and delivered, and the teaching and assessment methods. You will also get to meet some of our great departmental staff and students. You will experience what it is like to study in a higher education environment with lectures, seminars, tutorials and subject-specific sessions.

OFFER HOLDERS STUDYING MORE THAN ONE SUBJECT:

You will be able to choose which subject to visit when you book, unfortunately, due to time constraints, we are only able to provide one academic experience per day. However, you can book to attend multiple visit days

Your Support (Information Hub) - 9.30am until 1.30pm

Our Professional Support Services will be available on the day, either in their offices or in the Teaching and Learning Centre so you can find out more about Disability Support and our Counselling and Mental Health Services, as well as finding out more about our libraries, collections and facilities. See page 12 for further details.



Schedule for Parents, Guardians, Friends and Other Guests

Informational Talks & Sessions

While our offer holders are getting an idea of academic life at Durham we have put on informational talks for parents/guests/friends to attend. These will occur in the Teaching and Learning Centre (Map ref: 50/C7)

1.30pm - 2.15pm: Student Finance

2.15pm - 3pm: Current Student Q&A Panel

3pm - 3.45pm: Disability Support at Durham



Discover Durham Tours

We will also be holding tours of the city and campus for parents/carers & other guests during the afternoon.

Tours will leave from the Teaching and Learning Centre (Map Ref 24:D6) at 1.30pm, 2pm, 2.30pm and 3pm and will be led by our fantastic Durham Student Ambassadors.

No need to book - just turn up to the reception of the Teaching and Learning Centre on the day!



Information Hub

We know parents and guardians have questions and we are here to answer them. Whether you want to find out more about college life, or what support is available to students you can drop into our Information Hub on the day (between 9.30am - 1.30pm) in the Teaching and Learning Centre to find out more. We have staff from our Admissions Team and the Accommodation and Allocations Teams on hand to answer any questions you may have.

Department Session Locations

(See page 12 for the map)

Title	Room number/Name	Building Name	Map Key	Map References
Accounting	WB1001-1002	Waterside - Durham University Business School	73	D1
Anthropology	D104	Dawson Building	16	E6
Archaeology	D210	Dawson Building	16	E6
Biosciences	L50	Biological Sciences	4	E7
Business and Management	WB2005	Waterside - Durham University Business School	73	D1
Chemistry	CG85	Chemistry	14	E6
Classics and Ancient History	ER141	Elvet Riverside 1	33a	E3
Combined Honours in Social Sciences	CLC406 Derman Christopherson	Calman Learning Centre	8	E6
Computer Science	MCS2068	Maths & Computer Science	1	E8
Criminology	ES230	Arthur Holmes Building	9	E6
Earth Sciences	ES228/229	Arthur Holmes Building	9	E6
Economics	WB0001	Waterside - Durham University Business School	73	D1
Education Studies	CB28	Confluence Building	12	E6
Engineering	E005	Christopherson Building	11	E7
English Studies	ER201	Elvet Riverside 2	33b	E4
Finance	WB1004	Waterside - Durham University Business School	73	D1
Geography	W103	Geography West Building	13	D6
Government and International Affairs (Politics)	TLC033	Teaching and Learning Centre	50	D6
History	ER140	Elvet Riverside 1	33a	E3
Law	PCL048 Hogan Lovells	Palatine Centre	18	E6
Liberal Arts	ER157	Elvet Riverside 1	33a	E3
Marketing and Management	WB1003	Waterside - Durham University Business School	73	D1
Mathematical Sciences	MSC0001	Maths & Computer Science	1	E8
Modern Languages and Cultures*	ER153	Elvet Riverside 1	33a	E3
Music	MU006	Divinity House	38	C4
Natural Sciences	CLC203 Ken Wade	Calman Learning Centre	8	E6
Philosophy	ER142	Elvet Riverside 1	33a	E3
Philosophy, Politics, and Economics	WB2003	Waterside - Durham University Business School	73	D1
Physics	PH8	Rochester Building	7	D7

*Individual language sessions will also take place in Elvet Riverside building, room numbers are provided on page 11

Department Session Locations

Title	Room number /Name	Building Name	Map key	Map References
Primary Education	CB008	Confluence Building	12	E6
Psychology	L68	Psychology	4	E7
Sociology	ES231	Arthur Holmes Building	9	E6
Sport and Exercise Sciences	Dojo	Sports and Wellbeing Park (Maiden Castle)	19	I7
Theology and Religion	ER145	Elvet Riverside 1	33a	E3
Visual Arts and Film	ER149	Elvet Riverside 1	33a	E3

Language Specific Session Locations

Please note these are breakout rooms in Elvet Riverside 1 (33a/E3) following the initial general introduction in ER153.

Language Specific Rooms	Room Number
Arabic	ER147
Chinese & Japanese	ER146
French	ER153
German	ER155

Language Specific Rooms	Room Number
Italian	ER143
Russian	ER144
Spanish (Hispanic)	ER152

College Locations

Building Name	Map Key	Map References
Collingwood College	55	D8
Grey College	54	D8
Hatfield College	42	D3
John Snow College	61	A9
Josephine Butler College	59	C10
South College	60	B9
St Aidan's College	72	A8
St Chad's College	46	D4
St Cuthbert's Society (Bailey)	48	C5

Building Name	Map Key	Map References
St Cuthbert's Society (Parson's Field Court)	22	G4
College of St Hild and St Bede (currently located at Rushford Court)	82	A2
St John's College	47	D4
St Mary's College	51	C7
Stephenson College	58	B10
Trevelyan College	65	C8
University College	36	D3
Van Mildert College	63	B8

Wider Student Experience, Support and Facilities

Take some time to explore the wider student experience, our support services, and of course the facilities during your visit.

Staff and students will be available to talk to you between 9.30am and 1.30pm in the Information Hub or in their office locations. Take a look at the table below to see what is available and use the map on page 13 to find out where.

Title	Building Name	Map Key	Map References
Accommodation and Allocations	Teaching and Learning Centre	50	D6
Admissions	Teaching and Learning Centre	50	D6
Academic Support for Students	Teaching and Learning Centre	50	D6
Bill Bryson Library (Self-Guided Tours)	Bill Bryson Library	17	E6
Counselling and Mental Health Services	Palatine Centre	18	E6
Disability Support	Palatine Centre	18	E6
Durham Students' Union	Dunelm House	35	E4
International Office	Teaching and Learning Centre	50	D6
Performing Arts (Tours)	Sir Thomas Allen Assembly Rooms Theatre	45	D4
Performing Arts Music and Theatre	Sir Thomas Allen Assembly Rooms Theatre	45	D4
Placement Years	Teaching and Learning Centre	50	D6
Scholarships and Bursaries	Teaching and Learning Centre	50	D6
Sports Facilities, Team Durham	Sports and Wellbeing Park	19	I7
Sports, Team Durham	Sports and Wellbeing Park	19	I7
Student Loans Team	Teaching and Learning Centre	50	D6
Study Abroad	Teaching and Learning Centre	50	D6
Volunteering (Student Enrichment)	Sports and Wellbeing Park	19	I7

Finding your way

Our campus locations are colour coded. Look for the colour in the tables above to narrow down your search.

Rushford

The College of St Hild and St Bede is currently in a temporary home at Rushford Court, near to the Train Station and shown on the map as A2/ 82.

New/Old Elvet

As you head towards our main campus site (Mountjoy) you will pass our Elvet Riverside buildings and Dunelm House the home of Durham Students' Union.

Peninsular

Within the bend of the River Wear the Peninsular houses our 'Bailey' Colleges, Music, Theology and Religion and our Assembly Rooms Theatre.

Mountjoy

Our main campus location, previously referred to as the 'Science Site', houses many departments and Professional Services.

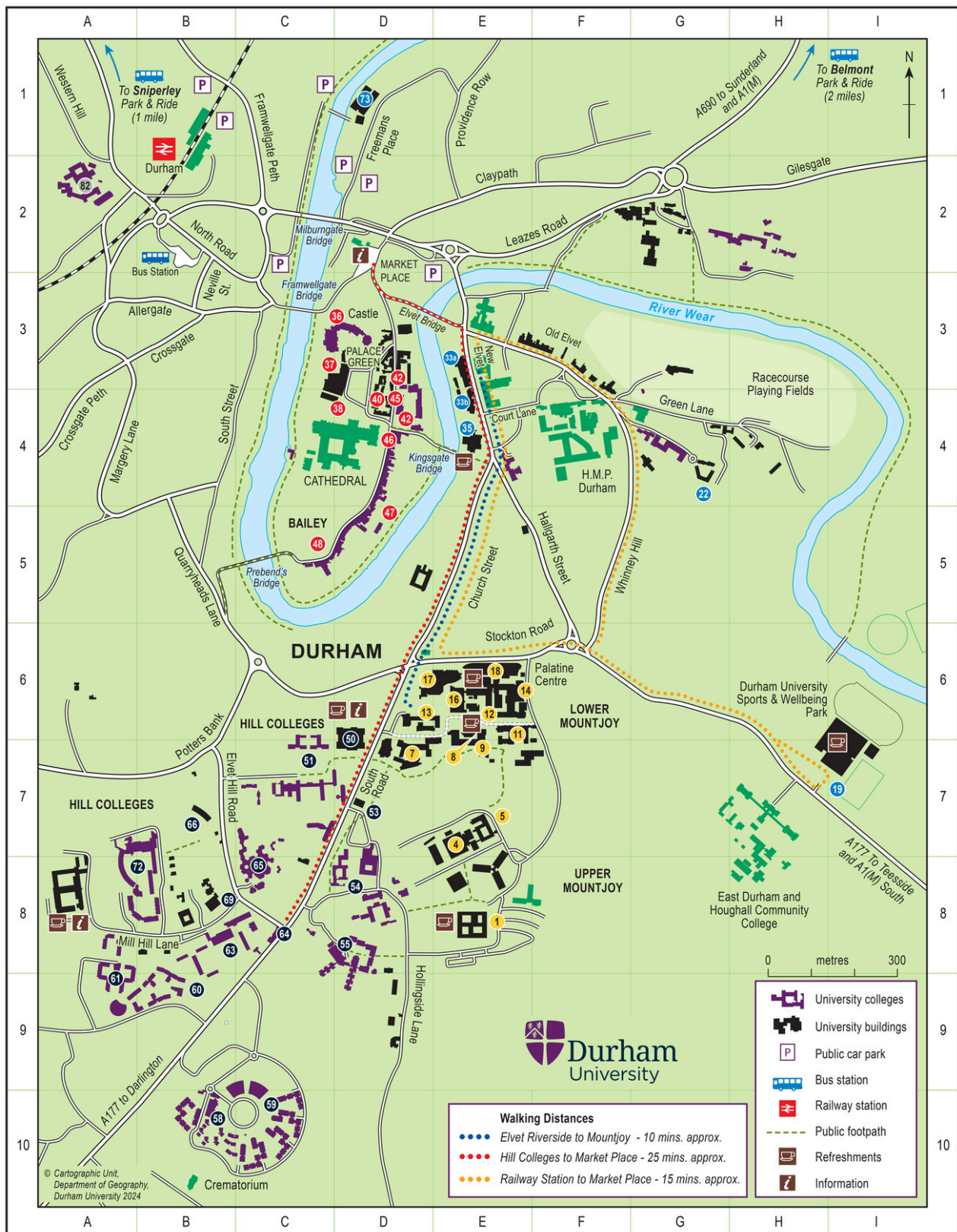
The Hill

As you head further up the hill you will see the home of many of our 'Hill' Colleges and the School of Government and International Affairs.

Durham City Map

To help you find your way our campus locations are colour coded. Look for the colour in the tables above to narrow down your search.

Durham University Sites: ● Rushford ● New/Old Elvet ● Peninsula ● Mountjoy ● The Hill



Shuttle Bus Schedule

Free buses will run at regular intervals between the times shown below. Just show your confirmation email when you get onboard!

Shuttle Bus 1 8.30am - 5pm

- [Train Station](#)
 - [Palatine Centre/Stockton Road](#) (for Lower Mountjoy buildings)
 - [Sports & Wellbeing Park](#) (Maiden Castle)
 - [Rushford Court](#) (for College of St Hild and St Bede) - until 12:15pm
- Returning on the reverse route

Top Tip



If you are heading to Palace Green from the train station it is quicker to walk!



Shuttle Bus 2 9.30am - 1pm

- [Howlands](#) - Drop off only (For Hill Colleges: Josephine Butler College, Stephenson College, South College and John Snow College)
- [South Road](#) (For Hill Colleges: Grey College, Collingwood College, St Mary's College, Trevelyan College, St Aidan's College and Van Mildert College)
- [New Elvet](#) (For Bailey Colleges: St Cuthbert's Society [Bailey], St John's College, St Chad's College, Hatfield College, University College and Durham Students' Union).
- [Old Elvet](#) (For St Cuthbert's Society [Parson's - Field]).
- [Sports & Wellbeing Park \(Maiden Castle\)](#) optional, depending on interest
- [Palatine Centre/ Stockton Road](#) (For the Information Hub in the Teaching & Learning Centre and Palatine Centre Support Services).

Shuttle Bus 3 1pm - 5pm

- [Maiden Castle](#) (last bus will leave at 4.45 pm)
- [Upper Mountjoy](#) (for Mathematical Sciences, Computer Science, Psychology, Biosciences)
- [Palatine Centre/Stockton Road](#) (for Lower Mountjoy)
- [Waterside Building](#) for Durham University Business School Subjects

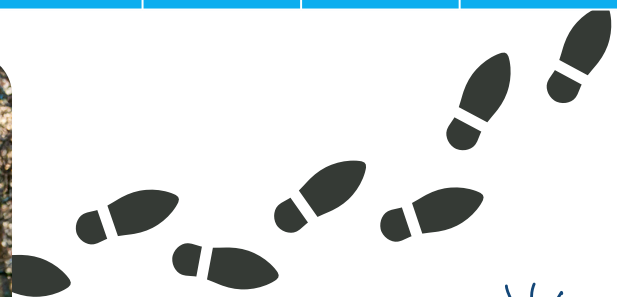


Walking Times

Being a student in Durham will require you to use your own steam to get around! It is often quicker to walk than it is to get in a car or use public transport.

Our buildings are spread across the city, however, the city itself is not very big and everything is within walking distance. We have included some of the approximate walking times below to help you with planning your day. These times do however depend on how fast you walk! You can also use Google Maps to plan your walking route and find out how long it will take you to move between venues.

	Train Station	Market Place	Dunelm House	Lower Mounjoy	Palace Green	Waterside Business School	Sports and Wellbeing Park
Approximate Walking Times in Minutes (Based on Google Maps)							
Train Station		9	16	24	13	31	32
Market Place	9		7	15	4	26	23
Dunelm House	16	7		8	6	21	19
Lower Mountjoy	24	15	8		13	18	15
Palace Green	13	4	6	13		25	24
Waterside Business School	10	5	8	12	25		15
Sports and Wellbeing Park	32	23	19	15	24	30	



Top Tip!

It's often quicker to walk around Durham rather than taking the bus. Make sure to wear comfortable footwear in Durham as there's quite a few hills and some uneven cobbled streets.



Explore the area - Tours

When visiting Durham City there are unique opportunities to explore and find out more.

You can undertake a self-guided tour using our Durham University Tours App.

Our app 'Durham University Tours' is available to download in the Apple App Store and the Google Play Store now! This will enable you to take self-guided tours, either in-person around the city or remotely from the comfort of your own home! The app provides a range of tours so that you have multiple options to choose from!

If you would prefer, you can take a guided tour, which leaves every half hour from 1.30pm until 3.30pm with one of our Ambassadors from our Teaching and Learning Centre (Map Ref 50:D6).



Did you know?

You can drop in and visit the Bill Bryson Library between 9.30am and 1.30pm for a self-guided tour (Map Ref 17:E6).



Find out more about...

Libraries, Museums and Study Facilities

The Bill Bryson Library (Map Ref 17:E6) is the largest of the University's libraries and provides access to resources for all subjects. It has 1800 study spaces including individual and group study rooms, collaborative and quiet study areas as well as a café. Access is provided to 1.6 million printed books, 19,000 e-journals and over 400,000 e-books and other digital items. Many Colleges also have small libraries and study rooms. You can visit the Bill Bryson Library to take a self-guided tour between 9.30am and 1.30pm.

We also have a further two locations to mention, boasting Durham University's world-class collections of art, archaeology, archives, rare books and manuscripts:

Palace Green Library, located between the Castle and Cathedral, (Map Ref 37:D3) was once the main University Library, it incorporates buildings dating back to the 15th century. It now houses the University's extensive archives and special collections, accessed in the Barker Research Library, which also provides 60 quiet student study spaces, galleries with both permanent and changing exhibitions, and events for families and school groups throughout the year.

The Oriental Museum, just off Mill Hill Lane opposite Van Mildert College (Map Ref 69:B8). It is home to galleries with both permanent and changing exhibitions, and events for families and schools groups throughout the year.

Galleries and collections in both venues support the University's research and teaching across the faculties, from foundation studies to doctoral level. Students are entitled to free entry to galleries and some enlist as volunteers or take up placement opportunities as part of their career development. A diverse programme of special events and temporary exhibitions ensures that there is always something new to see and do.



Find out more about...

Student Experience Directorate

Alongside academic excellence we place high value on providing experiences that will stretch and develop you. Experiences may happen inside colleges, through intercollege competitions, within the Students' Union or as part of the multitude of activities co-ordinated under the Student Experience Directorate.

The Directorate is responsible for co-ordinating university sport, staff and student volunteering and outreach, student theatre and music. Take a look at the sections below to find out how to explore more of each aspect.



DU Student Volunteering and Outreach

Students have endless opportunities to get involved with volunteering activities either within the University-wide, student-led, volunteering programme or with their college, department, society, or club. Last year more than 2500 students volunteered in the community, supporting over 500 opportunities, across the themes of culture, education, environment, social action, and sport and wellbeing. The direction and focus of volunteering at Durham is driven by an elected student executive committee. DUSVO (Durham University Student Volunteering and Outreach) is the largest volunteering organisation at Durham with over 25 student-led, community focussed projects and more than 50 student leadership opportunities.



Supporting over 100 local schools, charities and organisations, there are a wealth of opportunities available to students, but if you do not find what you are looking for, you can propose a new initiative, which you will be supported with.

To round up each year of success, we hold an annual celebration for all of our volunteers at the Durham University Volunteer Awards, where we recognise volunteers achievements and the positive impact they have had on the community. Why not pop along to speak to representatives at the Sports and Wellbeing Park (Map Ref 19/17) between 9.30am - 1pm.

Team Durham

Sport at Durham focuses on the core strands of performance, leadership, participation and community outreach. More than 75% of our students take part in sports on a regular basis. Our philosophy is to provide opportunities in sport to enable exceptional people to do exceptional things.

If you are a high-performance athlete, aspiring to play in University first teams, then please contact Albert Potts (a.d.potts@durham.ac.uk) for further information.

More details available at durham.ac.uk/colleges-and-student-experience/team-durham

You can take a look around our Sports and Wellbeing Park located at Maiden Castle (Map Ref 19:H7) any time between 9.30am to 4.30pm. We will also have representatives available for you to speak to about Team Durham Sport at the Sports and Wellbeing Park between 9.30am - 1pm.



THE  TIMES
THE SUNDAY TIMES

**GOOD
UNIVERSITY
GUIDE
2023**

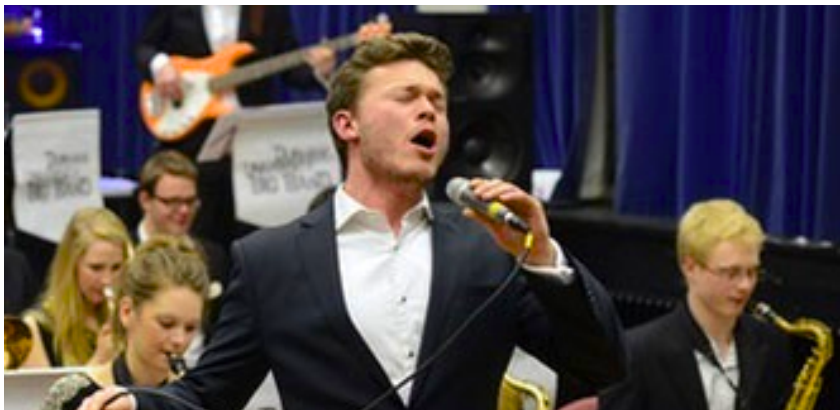
**SPORTS
UNIVERSITY
OF THE YEAR**

Performing Arts

Music Durham

Durham's musical life is so active and diverse that it is hard to escape it. From orchestras, bands, and opera, to gospel choirs, gamelan ensembles, African drumming, and chamber choirs, there is something to cater for every musical taste. Music Durham is the umbrella organisation that oversees Durham University's music societies, chapel choirs and college music ensembles.

Come along to speak to representatives at the Sir Thomas Allen Assembly Rooms Theatre (Map Ref 45/D4) between 9.30am - 1pm, to find out more about how you can continue with your musical life, or start your journey.



Durham Student Theatre

One society looks after all the theatre here at Durham, encompassing over 30 different theatre companies, Durham Student Theatre showcases upwards of 90 shows a year to 15,000 audience members. Student theatre is brimming with creative, like-minded individuals who come together to perform a diverse range of shows.

Whether you want to be onstage, backstage, in the tech box or directing the whole show, Durham Student Theatre aims to provide varied opportunities and support its membership doing what they love.

Sir Thomas Allen Assembly Rooms Theatre (Map Ref 45:D3) is the spiritual home for the theatrical scene, our very own proscenium arch venue that is only one of dozens in which we perform. Do come visit us between 9.30am and 1pm for a short tour of the theatre, or to speak to representatives who will be able to answer any of your questions that you might have about getting involved with theatre at Durham!



Find out more about...

Durham Students' Union

Since 1899 Durham Students' Union has been bringing students together to make their education and life better and champion their rights. Here, you'll meet different people and find a warm welcome to the things you care about and the new things you want to try. Durham SU gives you a chance to meet new people from across the University, whatever your college or department.

The Students' Union is home to over 250 student groups. Whether you're a fan of crocs or have a flair for journalism, whatever your interest there's a society for you. Associations bring together students from underrepresented groups to provide safe spaces to meet, make friends, lobby for change, and make sure that everyone feels at home in Durham

Durham SU is housed in Dunelm House (Map Ref 35:D4), the iconic concrete building on New Elvet, overlooking the Cathedral, the River Wear and Kingsgate Bridge. In the building you'll find wonderful events and activities run by students, as well as plenty of study space.

Kingsgate Bar & Café will be ready to fuel your day with coffee (or tea) that does good (every penny of profit goes back to students). Whether you're after a lunch break from your hectic schedule, a hot chocolate on a cold afternoon, a glass of fizz to celebrate the good times, or cake, because we never need an excuse for cake!

If you need a helping hand while at Durham, the Union's Advice Service is there for you, offering independent support and resources across a variety of issues. They are the only independent student advice service for Durham students, and provide support on a range of issues, like academic, housing, and financial advice.



Kingsgate Bar & Café has its own sun terrace and one of the best views in the city!



Find out more about...

Professional Support Services

Durham Centre for Academic Development (DCAD)

DCAD offers a range of educational services for Durham students and staff. Of particular interest to Post-offer Visit Day participants will be 'Academic Development for Students': a suite of courses, classes and consultations in academic study skills (e.g. academic writing; time management; strategies for being productive; etc).

Come and chat with us at the Information Hub, located in the Teaching and Learning Centre, top floor (Map Ref 50:D6) between 9.30am - 1.30pm for more details.

Scholarships and Bursaries

There are a range of scholarships and bursaries available to Undergraduate students which are either funded by the University, through partnerships with external organisations or through generous donations from alumni and friends of the University. Staff will be available in the Teaching and Learning Centre (Map Ref 50/D6) between 9.30am and 1.30pm to offer advice and guidance on university funding and to signpost to relevant opportunities.



Disability Support

Disability Support aims to support students in achieving their academic potential by offering advice and guidance and arranging appropriate provision. They offer support to those who may have a specific learning difference. If you feel you may benefit from their advice or support why not pop along to the department.

Counselling and Mental Health Service

The Counselling and Mental Health Service offers specialist support at any time during your studies if you are struggling with academic or personal challenges. It operates as an addition to the support offered in colleges and academic departments. Our Counsellors and Mental Health Advisors will help identify and overcome barriers to achieving your potential, promoting the development of self-awareness and a range of life skills.

These services are located in the Palatine Centre (Map Ref 18:E6) and are open for drop-in from 9.30am until 4pm.

Find out more about...

Placement Years

A placement year offers you the opportunity to spend a year gaining valuable work experience during your time at Durham University. It is a fantastic opportunity to immerse yourself fully within an organisation, applying the knowledge from your studies in a practical setting. You can choose to do a placement anywhere in the world so long as it is located in a country that is safe to travel to. The majority of departments offer placement years as an option which you will opt to take once at Durham University (except for Chemistry and Business degrees with embedded placements). The placement year will occur in the penultimate year, extending your degree to either 4 or 5 years. Want to find out more? Come along to the Information Hub on the top floor of the Teaching and Learning Centre (Map Ref 50:D6) between 9.30am - 1.30pm.

Still time to spare?

Why not visit some of the city centre visitor attractions?

- Museum of Archaeology
- Durham Cathedral
- World Heritage Site Visitor Centre
- Botanic Garden
- Durham Riverside Walk.

Find out more before you visit Durham at:
thisisdurham.com



Study Abroad

Durham University has 300 student exchange agreements under our European and non-European Exchange programmes. Our partner institutions are spread across the globe from Austria to New Zealand! Almost 300 Durham students every year take the opportunity to study abroad and we welcome over 400 students to Durham from our partner institutions each year. It really is the opportunity of a lifetime and will add something unique to your CV.

Advice and support will be on hand in the Information Hub (Map Ref 50:D6) in the morning between 9.30am - 1.30pm.

International Office

Staff and students from our International Office will be available in the Teaching and Learning Centre to help with any questions you may have about studying in Durham.

Advice and support will be on hand in the Information Hub (Map Ref 50:D6) in the morning between 9.30am - 1.30pm.



Food & Drink

University catering outlets offer a wide variety of snacks and drinks to keep you refreshed and raring to go. Please see individual café information for opening times.



The following University outlets will be open during your visit. There will be a range of hot and cold lunches, cakes, snacks and cold drinks, as well as a range of brilliant hot drinks from local coffee roasters and Starbucks.

Calman Café

8am – 4pm

Location: Calman Learning Centre (Map Ref 8:E6)



Maiden Castle Café

8am – 4pm

Location: Maiden Castle (Map Ref 19:H7)



Zing Kitchen

8am – 4:30pm

Location: Teaching and Learning Centre (Map Ref 50:D6)



Bill Bryson Café

9:30am – 4pm

Location: Bill Bryson Library (Map Ref 17:E6)



Maths and Computer Science Café

8am – 4 pm

Location: Maths and Computer Science Buildig (Map Ref 1/E8)



Palatine Centre Café

9am – 4:30pm

Location: Palatine Centre (Map Ref 18:E6)



Top Tip

We're expecting that 'Zing Kitchen' will be extremely busy during the event. If you would prefer an alternative that is close to there, which may be quieter, visit the Palatine Café which serves Italian style handmade pizza and authentic pasta and Mediterranean salad.

Please note: We ask that you please use cashless payments in our cafés.

Travelling to the University...

We strongly encourage all visitors to use public transport. Parking in Durham city and at nearby Park and Ride car parks is limited and we are unable to provide University parking unless you have access needs.

Visitors with access needs

Please let us know on your booking form if you or a guest has an access need so that we can help support you during your visit. If you didn't complete this at the time, please do [get in touch](#). Whether you need access to specific facilities or require to be seated at the front of a lecture theatre we are here to help. You may also find it helpful to view the access to our buildings by visiting accessible.co.uk/durham-university.



By Rail

Durham is well served by rail links from major cities across the country. The East Coast mainline service from London King's Cross can take less than 3 hours and express links operate from Manchester, Sheffield and Leeds with cross country links from Scotland, the Midlands, and the South West. Durham Railway Station is approximately 1.5 miles from the Palatine Centre on the Lower Mountjoy site. The number 40 Cathedral bus service runs regularly from the train station into the city centre.

To check the schedule and route visit durham.gov.uk and search for "Cathedral bus".

A University Shuttle Bus service will run from the train station. Find the shuttle bus schedule on Page 13.

By Coach

There are several express coach services daily from most major cities. The numbers X12, 5, 6 and 56 are some of the buses that run from the city bus station to the junction leading to the Palatine Centre and the Hill Colleges. See arrivabus.co.uk for timetable details. Alternatively, you can walk to the market place which is about an 8-minute walk and visit our inflatable dome where ambassadors are on hand to provide directions.

By Air

Durham is 26 miles from Newcastle Airport and 24.3 miles from Teesside International Airport. Both have regular domestic and international flights. Newcastle Airport is linked to Durham City by rail services. Teesside International Airport is 6 miles from Darlington railway station, which has regular connections to Durham.

By Road

Durham City centre is two miles from the A1(M). Leave the motorway at Junction 62 on the A690 Durham – Sunderland road and follow signs to Durham City centre. Please check your route for roadworks, which may cause delays.



Public parking

We strongly advise visitors to use public transport to travel to Durham.

Public car parks within walking distance of the city centre are:

- Prince Bishop's Shopping Centre (DH1 3UJ)
- Sidegate (DH1 5SY)
- Walkergate (DH1 1SW)
- The Riverwalk (DH1 4SJ)

Please note there is a parking charge to use these car parks.

The road running through the Market Place to the Cathedral is subject to a £2.00 congestion charge which must be paid in advance or by 6pm on the charging day. Please call 0191 384 6633 to make payment by credit or debit card.



For more information on car parking please visit durham.gov.uk and search for Durham City Car Parks.

Park and Ride

Public transport runs from the Park and Ride car parks into Durham city. One ticket must be purchased for each passenger (£2.00 per person) when using these facilities, and the bus must be used. Park and Ride sites close at 7pm and vehicles will be locked in overnight if still on site at this time. We recommend arriving at the Park and Ride a minimum of one hour prior to your first session as roads may be congested.

Park and Ride sites are operated by Durham County Council - please visit durham.gov.uk/parkandride to find out more.



Visit durham.gov.uk/transport for more travel information

- Bus timetables and routes
- Durham City Park and Ride
- Roadworks, road closures and improvement schemes
- Bus fares and passes
- Blue Badge disability parking scheme
- Get the latest travel updates
- Road and transport news
- Emergency road closures.



Durham University
The Palatine Centre
Stockton Road
Durham
DH1 3LE

Enquiries

durham.ac.uk/study/askus



Visit the University's
Facebook page:
facebook.com/durhamuniversity



Follow @durham_uni for all the
latest academic news and
developments



View our video content on
University life and events
youtube.com/durhamuniversity



View our latest snaps on
Instagram @applydurham,
@durhamuniversity or
@thedurhamstudent



Follow our student blogs to
discover what life is like at
Durham University
durham-student.org



Watch our film at
durham.ac.uk/study/ug

durham.ac.uk/experience